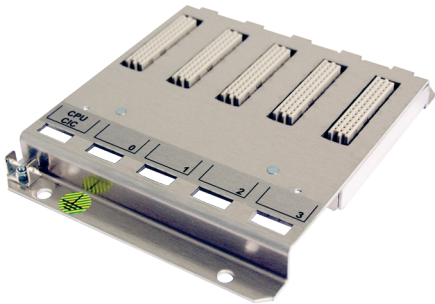


C-DIAS Module Carrier

CMB 022/042/082



Every module carrier consists of an aluminum carrier-profile for mechanical attachment of the modules and a bus circuit board to connect the modules. The bus circuit board is located on the back of the module carrier and consists of the collective lines where data are interchanged (periphery bus).

The modules are designed so that they are hooked on at the bottom and snapped on at the top. Beginning at the slot right next to the interface module (CIC), respectively the central unit (CCL, C-IPC), all slots are numbered in rising sequence from left to right.

Technical data

	CMB 022	CMB 042	CMB 082
Storage temperature	-20 – +85°C		
Operating temperature	0 – +60°C		
Humidity	0 – 95%, without condensation		
EMV stability	in accordance with EN 61000-6-2 (industrial)		
Shock resistance	EN 60068-2-27	150m/s ²	
Protection Type	EN 60529	IP20	
Standardization	UL (E247993)		

Technical data

	CMB 022	CMB 042	CMB 082
Article numbers	12-002-022	12-002-042	12-002-082
System slot	CIC / CCL / C-IPC 1)	CIC / CCL / C-IPC 1)	CIC / CCL / C-IPC 1)
User slots	2	4	8
Dimensions (mm)			
Width	75	125	225
Height	149.5	149.5	149.5
Maximum depth	17	17	17
Maximum depth with modules	125	125	125
Distance of the attachment holes horizontally	55	85	125
Distance of the attachment holes vertically	140	140	140
Material	AlMg 2mm		
Surface treatment	none (blank)		
Ground	via attachment screws		

1) CIC Interface module CCL Processor module C-IPC ... C-DIAS Industrial PC